



SPK 32080

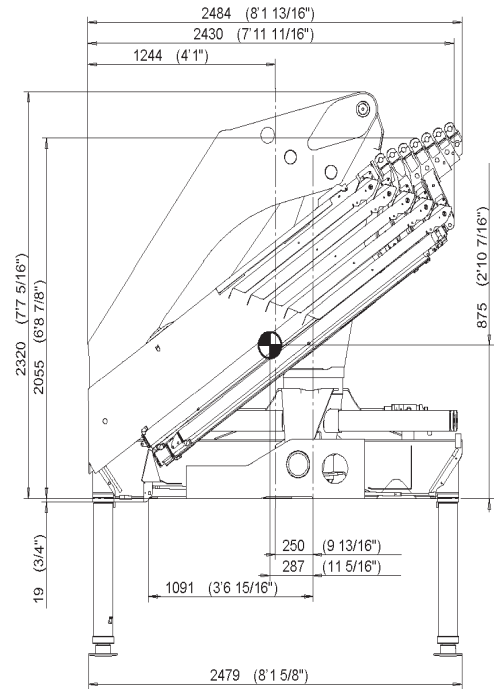
- Equipped with load holding valves for safe crane operations
- High speed boom extension and retraction with Return Oil Utilization
- Optimized lifting performance with the use of high tensile steel and hexagonal boom design
- Lightweight yet robust construction according to European standards (EN 12999)
- Optional Overload Protection and Emergency Stop Button
- Professional installation solutions
- Suitable for installation on 3-axle trucks

30.4 mt
Max. lifting
moment

12.2 m
Max. outreach

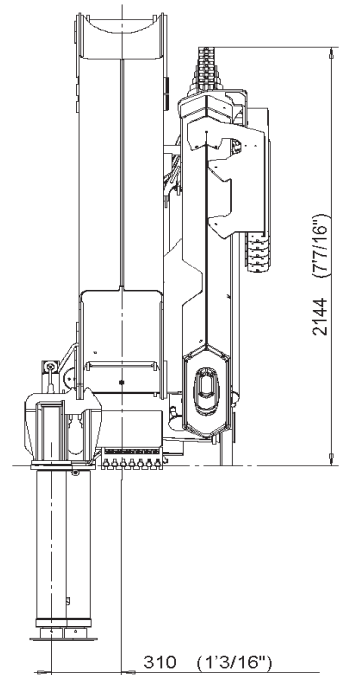
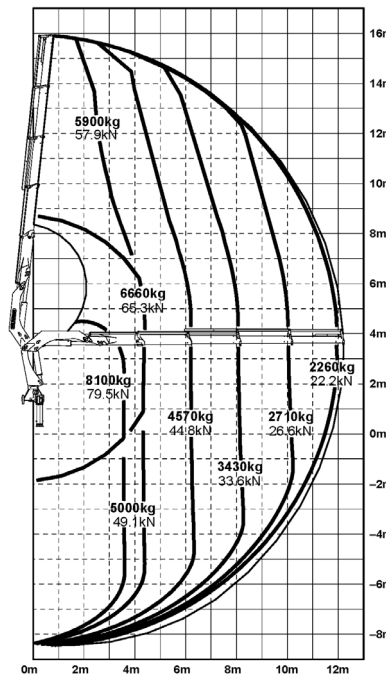
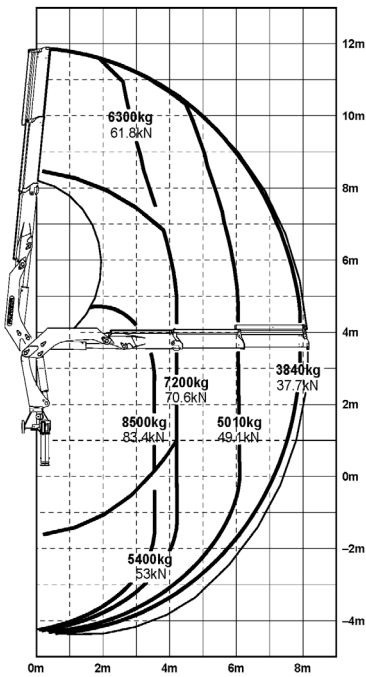
TECHNICAL SPECIFICATIONS (EN 12999 H1-B3)

Max. Lifting Moment	mt	30.4
Max. Lifting Capacity	kg	8500
Max. Outreach	m	8.1 (A) / 10.1 (B) / 12.2 (C)
Slewing Angle	o	400
Slewing Torque	mt	3.8
Stabilizer Spread	m	6.0 (R3X)
Fitting Space Required (Std)	m	0.972
Width Folded	m	2.484
Operating Pressure	bar	300
Recommended Pump Capacity	l/min	55 - 80
Dead Weight (Std)	kg	3118



SPK 32080 A

SPK 32080 C



Authorized Dealer:

Units shown in the leaflet are partially optional equipped and do not always correspond to the standard version. Country-specific regulations must be observed. Dimensions may vary. Subject to technical changes, errors and translation mistakes.

Asia Pacific Distributor Managed By:

PALFINGER ASIA PACIFIC PTE LTD

3 International Business Park | Nordic European Centre
#05-25/26 | Singapore 609927

T +65 6592 9192

asia@palfinger.com

F +65 6591 7737

www.palfinger.com