



SPK 10000

- Equipped with load holding valves for safe crane operations
- High speed boom extension and retraction with Return Oil Utilization
- Optimized lifting performance with the use of high tensile steel and hexagonal boom design
- Lightweight yet robust construction according to European standards (EN 12999)
- Optional Overload Protection and Emergency Stop Button
- Professional installation solutions
- Suitable for installation on 2-axle trucks

9.5mt

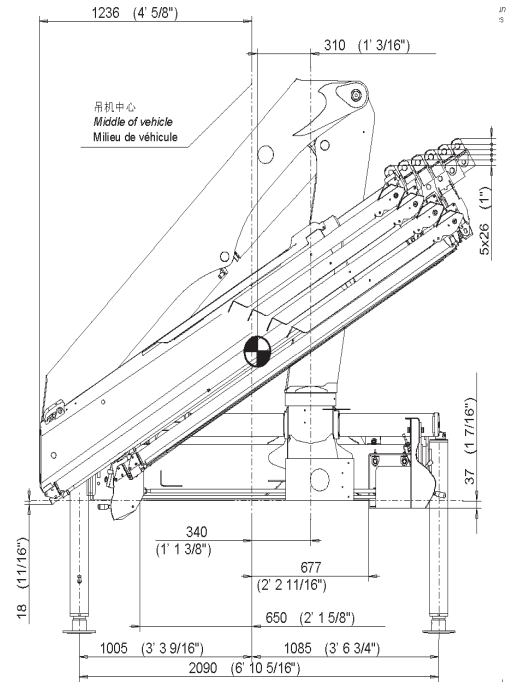
Max. lifting
moment

8.2m

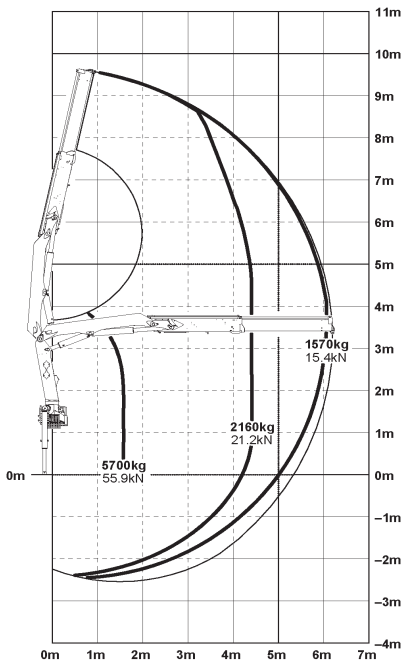
Max. outreach

TECHNICAL SPECIFICATIONS (EN 12999 H1-B3)

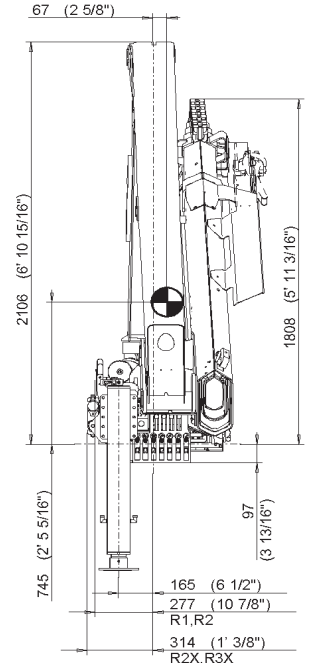
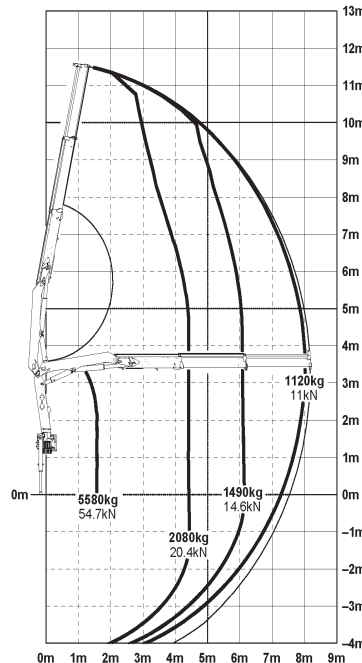
Max. Lifting Moment	mt	9.5
Max. Lifting Capacity	kg	5700
Max. Outreach	m	6.2 (Std) / 8.2 (A)
Slewing Angle	o	400
Slewing Torque	mt	1.2
Stabilizer Spread	m	4.87 (R2 / R2X)
Fitting Space Required (Std)	m	0.657
Width Folded	m	2.5
Operating Pressure	bar	315
Recommended Pump Capacity	l/min	30 - 45
Dead Weight (Std)	kg	1071



SPK 1000 Std



SPK 10000 A



Authorized Dealer:

Units shown in the leaflet are partially optional equipped and do not always correspond to the standard version. Country-specific regulations must be observed. Dimensions may vary. Subject to technical changes, errors and translation mistakes.

Asia Pacific Distributor Managed By:
PALFINGER ASIA PACIFIC PTE LTD

3 International Business Park | Nordic European Centre
 #05-25/26 | Singapore 609927
 T +65 6592 9192
 asia@palfinger.com

F +65 6591 7737
 www.palfinger.com